

Cinema Surround Speaker



KPT-8-VB

SPECIFICATIONS

The Klipsch KPT-8-VB is a cinema surround channel speaker system that brings a new level of seamless ambience and envelopment to the sound image in small- to medium-sized auditoriums. Continuing to advance Klipsch's technology leadership position, this patented, Virtual Boundary Array Technology (VBAT) loudspeaker permits a 50% reduction in the required number of surround speakers typically used in today's conventional surround channel array.

This exciting new technology uses a pair of our patented skewed horns in a side by side configuration that provides coverage in excess of 140° in the horizontal. The result is consistent coverage over a much wider area than was previously possible. These new horns also have a tighter 60° vertical pattern for greater distance throw, which is better suited to today's wider auditoriums.

The large voice coil 8-inch woofer and pair of 1-inch titanium diaphragm compression drivers give the KPT-8-VB truly prodigious power handling. When combined with 98dB sensitivity, the result is truly effortless reproduction of the tremendous dynamic range present in today's digital sound tracks.

The system's durable enclosure features an angled 15-degree down-firing front baffle and rear panel equipped with threaded inserts to accommodate industry-standard brackets. This facilitates quick, simple and secure installation.

The KPT-8-VB incorporates the standard SMPTE/ISO 2696 X-curve into its response and is capable of a solid 50Hz response, further enhancing the realism in the digitally mastered effects channels.

An array of KPT-8-VB's have an uncanny ability to localize and track directional effects and provide seamless envelopment, setting a new standard for the suspension of disbelief in the movie-going experience.

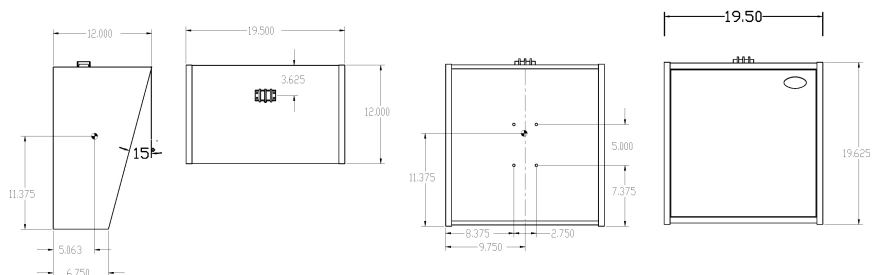
FREQUENCY RESPONSE ¹	55Hz-20kHz ± 3dB, 46Hz-23kHz -10 dB
POWER HANDLING ²	200 watts (28V) 40Hz-10kHz
RECOMMENDED AMP. POWER	200 watts continuous / 800 watts peak
CALC. MAX. CONT. OUTPUT ³	118dB
SENSITIVITY ⁴	98dB
COVERAGE	Horizontal 130° ± 30° 250Hz-20kHz Vertical 60° ± 20° 2200Hz-20kHz
DI	7db ± 2db 400Hz-20kHz
Q	5
NOMINAL IMPEDANCE	8 ohms (4.5 min @ 175Hz)
TRANSDUCERS	One K-81-EP 8" woofer Two K-103-TI-KP 1" titanium diaphragm compression drivers, on K-706 cinema skewed horns.
INPUT CONNECTORS	Two point barrier strip
HEIGHT	19.625 (49.85cm)
WIDTH	19.5 (49.53cm)
DEPTH	12" (30.48cm) Top 6.75" (17.78cm) Bottom
WEIGHT	32 lbs. (14.52kg)

1 3M, Half-space anechoic with horn eq applied.

2 AES Standard, continuous pink noise 50Hz-10kHz, 6dB peaks.

3 Calculated at 1M half-spaced at power handling power input.

4 SPL at 1M, half spaced anechoic with 2.83 volts input



www.klipsch.com
1-800-KLIPSCH