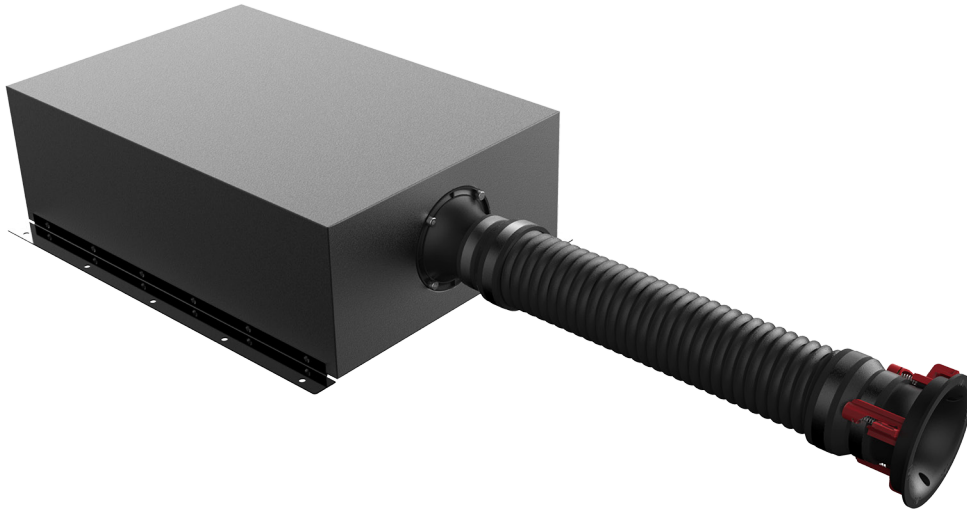


# PRO-800SW

## 8" IN-CEILING BANDPASS SUBWOOFER



### DISCRETE LOW FREQUENCIES

The PRO-800SW provides clean, dynamic low frequencies to support distributed audio or small home theater systems, while its bandpass design allows for a minimal visual footprint in the room. The robust, flexible port tube opens to just a 4.5" opening with a flat magnetic grille that matches the diameter of most down can lights - for a clean, modern look in any interior space.

### HIGH PERFORMANCE ACOUSTICS

8" long-throw Cerametallic™ woofer provides dynamic, balanced low frequencies, while the dual voice coil design allows for maximum system design flexibility. Maximize the output and acoustic performance using the KDA Series DSP amplifiers, which include presets for optimized EQ and limiter settings custom designed by Klipsch engineers specifically for the PRO-800SW.

### PATENT-PENDING SKYHOOK™ TOOL-FREE INSTALLATION SYSTEM

The exclusive installation system engages the ceiling connector dog legs automatically when it is inserted into the cutout hole, eliminating the need for a screwdriver or drill, and greatly reducing installation time.

### MDF ENCLOSURE

The durable, robust MDF enclosure, provides accurate, powerful low frequencies while helping to isolate sound from neighboring rooms.

### MAGNETIC, PAINTABLE GRILLE

Magnetic, bezel-free, paintable grille blends seamlessly into even the most luxurious of living spaces and home theaters.

### FLOOR VENT KIT ACCESSORY

Also available is a vent boot kit, allowing the PRO-800SW port tube to connect to a 4"x10" floor vent, for more discrete termination. (Sold Separately)

### SPECIFICATIONS

<b>FREQUENCY RANGE*</b>	38Hz - 125Hz +/- 3dB
<b>SYSTEM TYPE</b>	Bandpass via flexible port tube
<b>WOOFER</b>	8" (203cm) Dual Voice Coil Long-Throw Cerametallic™
<b>MAXIMUM OUTPUT*</b>	103dB @ 70Hz
<b>POWER HANDLING</b>	125W RMS / 300W Peak
<b>IMPEDANCE</b>	2 x 8 Ohm
<b>ENCLOSURE MATERIAL</b>	MDF
<b>FINISH</b>	Black Polymer Veneer with White, Paintable Grille
<b>PRODUCT DIMENSIONS</b>	Cabinet: 6.9" H x 21.1" W x 14.2" D (176mm x 536mm x 361mm) Grille: 5" (127mm)
<b>MOUNTING DEPTH</b>	7" (178mm)
<b>CUTOUT DIAMETER</b>	4.25" (108mm)
<b>PRODUCT WEIGHT</b>	22.1 lbs (10.1 kg)
<b>ACCESSORIES</b>	PRO-800SW Vent Boot Kit (Sold Separately)
<b>BUILT FROM</b>	2017

\*With Klipsch KDA Amplifier DSP Preset

**Klipsch**  
KEEPERS OF THE SOUND

3502 WOODVIEW TRACE INDIANAPOLIS, IN 46268 | KLIPSCH.COM

All specifications are subject to change without notice. ©2017 Klipsch Group, Inc. Klipsch, Keepers of the Sound is a registered trademark of Klipsch Group, Inc. a wholly-owned subsidiary of Vox International Corporation.