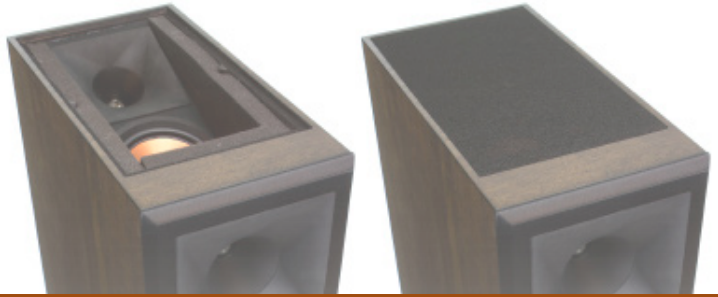


RP-280FA

Klipsch
REFERENCE
PREMIERE



TAKE YOUR MOVIES AND MUSIC TO NEW HEIGHTS

Our proprietary speaker technologies are ideal for delivering the most immersive, impactful 360° Dolby Atmos® listening experience. Controlled directivity and high-performance have been an integral part of Klipsch acoustic design principals for the better part of a century.

90x90 HYBRID TRACTRIX HORN

Redesigned Tractrix® Horn utilizes a circular horn throat paired to a square horn mouth to further improve high-frequency response and extension, while enhancing imaging and dynamics. The compressed molded rubber construction adds high frequency damping to minimize distortion and improve detail. This creates the cleanest, most natural sound possible.

LINEAR TRAVEL SUSPENSION (LTS) TITANIUM TWEETER

A Linear Travel Suspension maximizes dynamics for enhanced, detailed performance. LTS Tweeters have been a hallmark of previous Reference lines, as well as our flagship Klipsch Palladium series, making it a core component of some of the best speakers in the world.

SPUN COPPER CERAMETALLIC WOOFERS

Cerametallic woofers represent the pinnacle of Klipsch driver design, maintaining exceptional rigidity, and lightweight construction, for minimal cone breakup and distortion. When paired with the Tractrix Horn-loaded LTS tweeter, it provides speaker efficiency highest in its class.

TRACTRIX PORT

Utilizing Tractrix geometry, the Reference Premiere ports allows for the most efficient, fastest air transfer from the cabinet - for the cleanest, most powerful low frequency response on the market

MDF CABINET WITH PREMIUM FINISH

Contemporary aesthetic with absolute durability that results in a seamless integration into any décor, with real wood or polymer veneer finishes available.

STRONG, FLEXIBLE, REMOVABLE GRILLE

Front grill attaches magnetically for an elegant transition from powerful showstopper to discrete performance piece.

SPECIFICATIONS - MAIN CHANNEL

FREQUENCY RESPONSE	32-25kHz +/- 3dB
SENSITIVITY	98dB @ 2.83V / 1m
POWER HANDLING (CONT/PEAK)	150W / 600W
NOMINAL IMPEDANCE	8 Ohms Compatible
CROSSOVER FREQUENCY	1750Hz
HIGH FREQUENCY DRIVER	1" Titanium Dome LTS Tweeter with Hybrid Tractrix Horn
LOW FREQUENCY DRIVER	Dual 8" Cerametallic Cone Woofers
ENCLOSURE MATERIAL	MDF
ENCLOSURE TYPE	Bass Reflex
INPUTS	Dual Binding Posts
HEIGHT	43.125" (109.54 cm)
WIDTH	10.5" (26.67 cm)
DEPTH	19.75" (40.17 cm)
WEIGHT	71.75 lbs (32.5 kg)
FINISH	Real Wood Veneer: Walnut, Black Polymer Veneer: Ebony, Cherry
BUILT FROM	2015

SPECIFICATIONS - HEIGHT CHANNEL

FREQUENCY RESPONSE	Conforms to Dolby Atmos Specification
SENSITIVITY	Conforms to Dolby Atmos Specification
POWER HANDLING (CONT/PEAK)	75W / 300W
NOMINAL IMPEDANCE	8 Ohms Compatible
CROSSOVER FREQUENCY	2kHz
HIGH FREQUENCY DRIVER	1" Titanium LTS Tweeter with Hybrid Tractrix Horn
LOW FREQUENCY DRIVER	6.5" Cerametallic Cone Woofer
ENCLOSURE MATERIAL	MDF
ENCLOSURE TYPE	Acoustic Suspension
INPUTS	Single Binding Posts

Klipsch
KEEPERS OF THE SOUND

3502 WOODVIEW TRACE INDIANAPOLIS, IN 46268 | KLIPSCH.COM

All specifications are subject to change without notice. ©2015 Klipsch Group, Inc. Klipsch, Keepers of the Sound and Tractrix are registered trademarks of Klipsch Group, Inc. registered in the US and other countries. A wholly-owned subsidiary of Vox International Corporation. Dolby Atmos is a registered trademark of Dolby Laboratories.